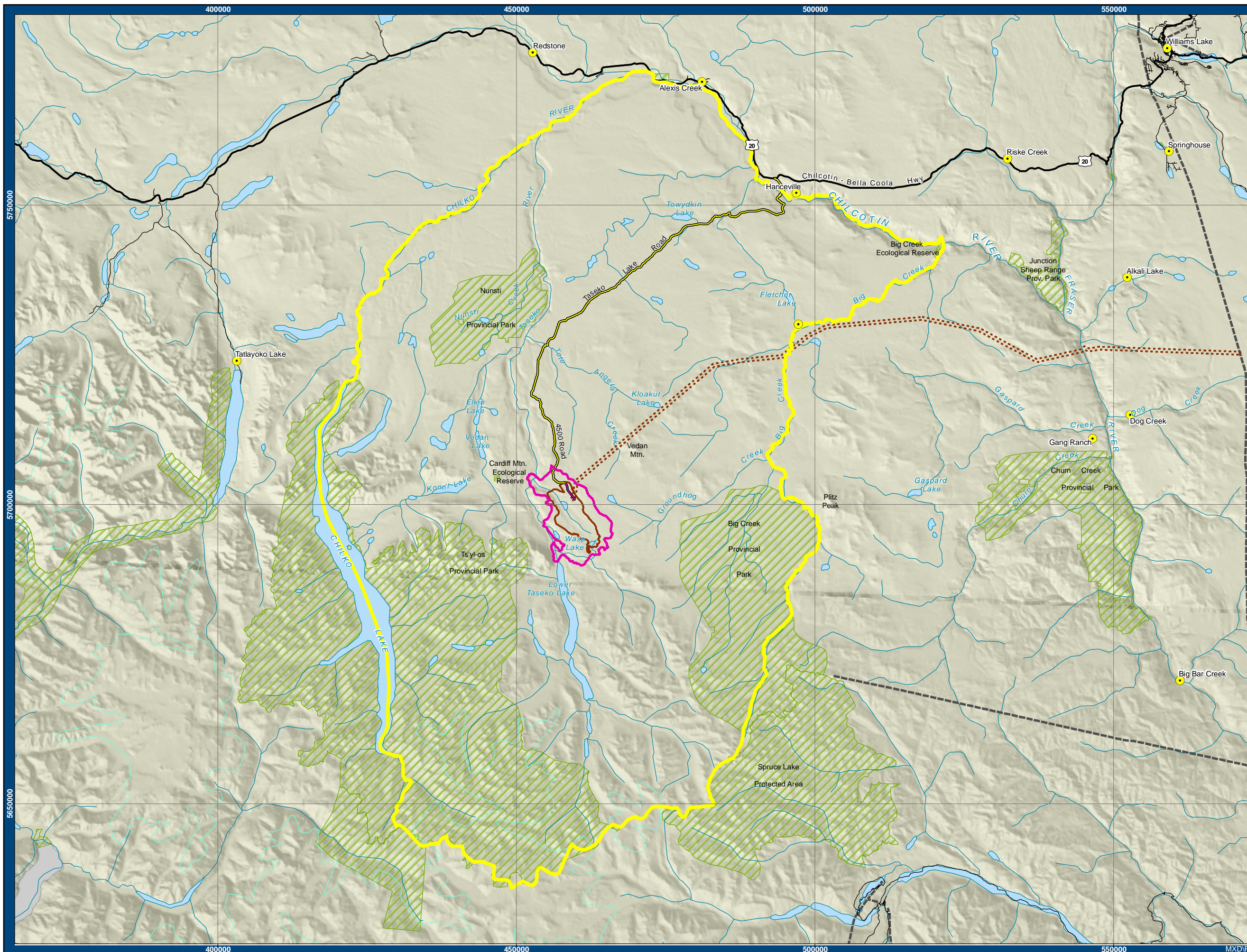
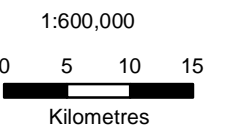


Figure 2-2
 Water Quality and Aquatic
 Ecology Local and Regional
 Study Areas



LEGEND

- Existing Access Road
- Proposed Prosperity Mine Access Road
- Maximum Disturbance Area
- Proposed Transmission Corridor (500m)
- Aquatics LSA
- Aquatics RSA
- City/Town
- Highway
- Road
- BC Hydro Transmission Line
- River (1:2mil)
- Icefield (1:2mil)
- Lake (1:2mil)
- Protected Area



Jacques Whitford
 AXYS

Map Prepared by
 Jacques Whitford AXYS Ltd.

Data Sources:
 Province of British Columbia, Taseko Mines Ltd.
 Projection: UTM Zone 10, NAD 83

Produced by: John Blyth
 Verified by: Tony Dinneen
 Date: June 26, 2008
 Rev #: 03