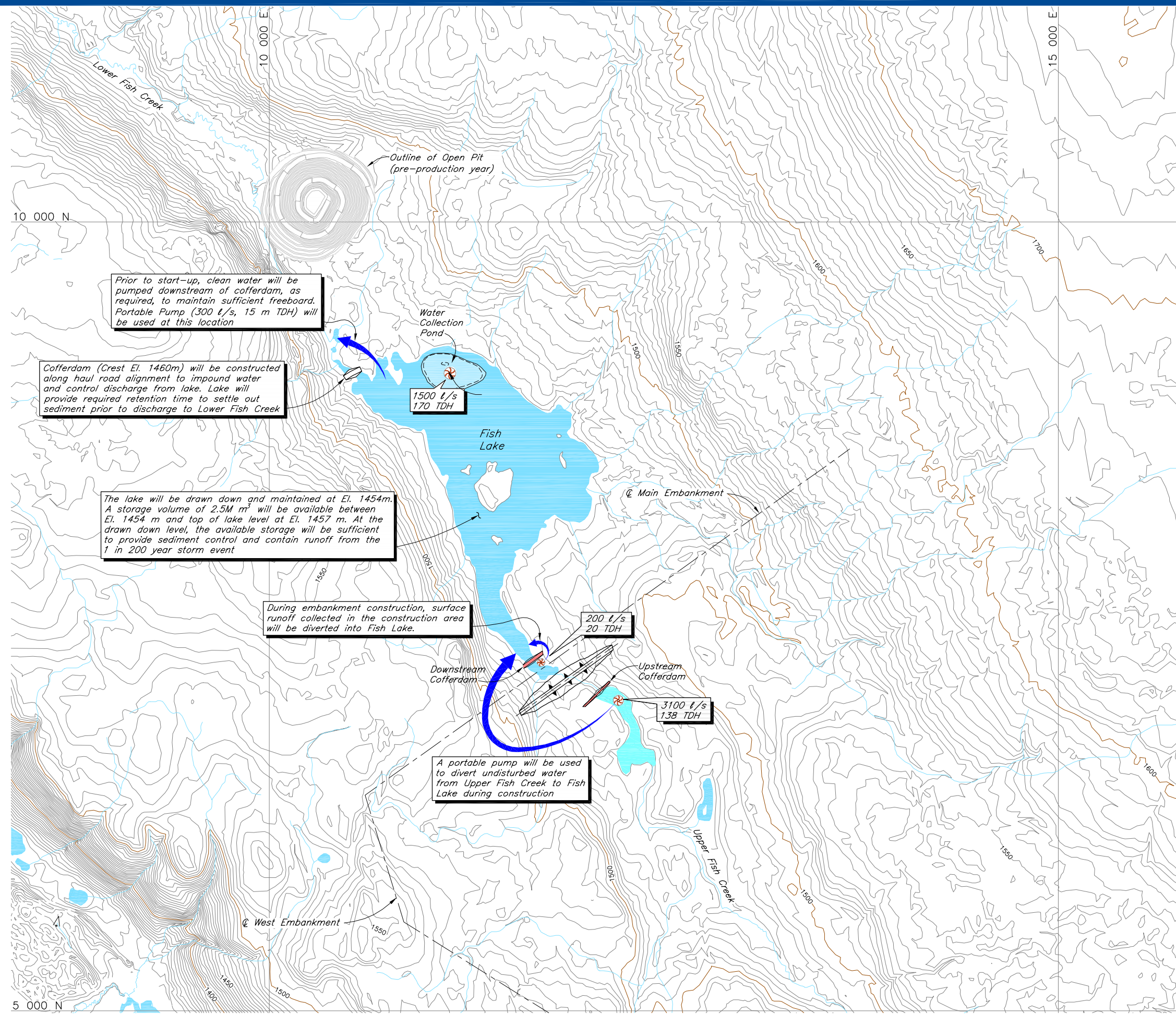


Figure 4-29
Water Management and
Sediment Control
Stage 1a Pre-Construction



Prior to start-up, clean water will be pumped downstream of cofferdam, as required, to maintain sufficient freeboard. Portable Pump (300 l/s, 15 m TDH) will be used at this location




Cofferdam (Crest El. 1460m) will be constructed along haul road alignment to impound water and control discharge from lake. Lake will provide required retention time to settle out sediment prior to discharge to Lower Fish Creek

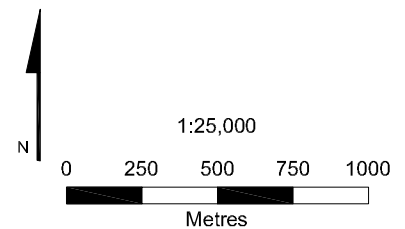
The lake will be drawn down and maintained at El. 1454m. A storage volume of 2.5M m³ will be available between El. 1454 m and top of lake level at El. 1457 m. At the drawn down level, the available storage will be sufficient to provide sediment control and contain runoff from the 1 in 200 year storm event

During embankment construction, surface runoff collected in the construction area will be diverted into Fish Lake.

A portable pump will be used to divert undisturbed water from Upper Fish Creek to Fish Lake during construction

LEGEND

-  Pump
-  TDH
-  Flow Path



Knight Piésold
 CONSULTING

Map Prepared By
 Knight Piésold Consulting

Produced by: WAL
 Verified by: GLS
 May 7, 2008
 Revision A