

# Lower Churchill Project Review Panel

*Keith Russell*

*Nunatsiavut Government*

*Ordinary Member for Upper Lake Melville*

*April 1<sup>st</sup>, 2011*

# Why I am Here

- **Born and Raised in Goose Bay**
- **Labrador Inuit Ancestry**
- **Growing Up in Labrador**
- **Ordinary Member for ULM in NG**
- **My Consultation with the People**

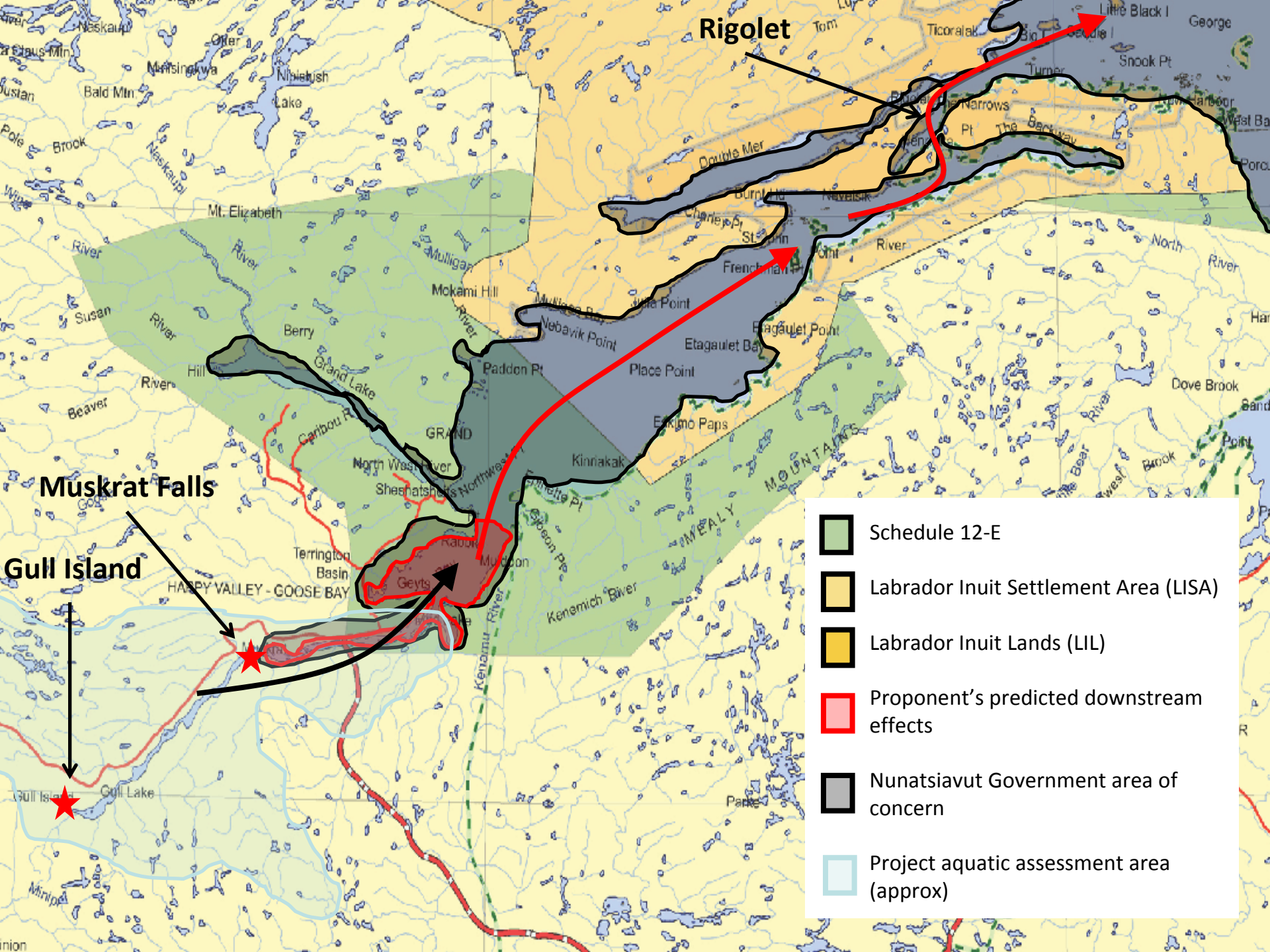


# The Project Boundary

- Continued requests for changes to the project boundary by the Nunatsiavut Government have been ignored
- Labrador Inuit concerns about changes to resources and culture have been ignored
- Traditional Knowledge







Rigolet

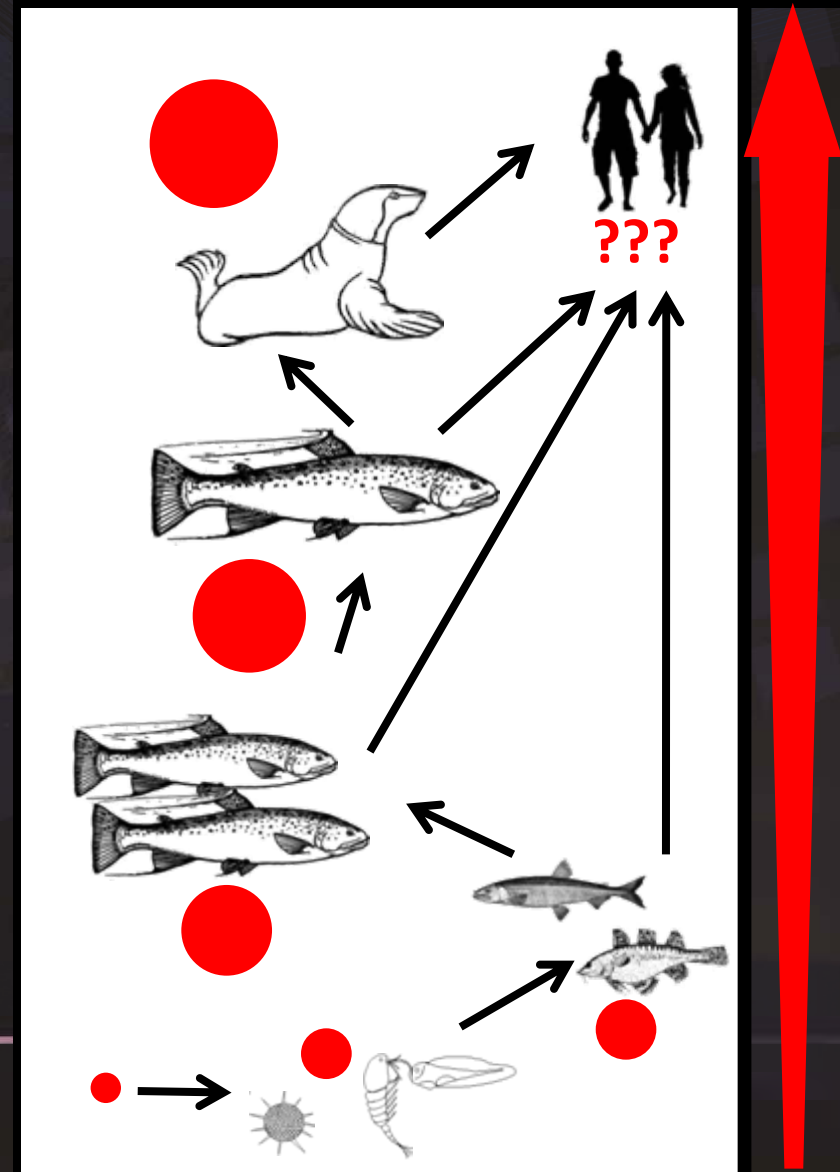
Muskkrat Falls

Gull Island

-  Schedule 12-E
-  Labrador Inuit Settlement Area (LISA)
-  Labrador Inuit Lands (LIL)
-  Proponent's predicted downstream effects
-  Nunatsiavut Government area of concern
-  Project aquatic assessment area (approx)

# Down Stream Effects

- Impacts beyond the mouth of the river
- We live Here – Right Down Stream!
- Contaminated water and zooplankton will flow into Lake Melville
- Underestimated levels of MeHg – I Eat Seal!
- What If? Loss of species, food quality, and access
- Our Way of Life
- Our Food Chain





# Our Environment, Our Food Chain



# The People of Labrador

- Nunatsiavut Inuit
- NunatuKavut Inuit
- Innu
- Settlers
- Non-Aboriginal Residents

More than just a single group need to be a part of this process!



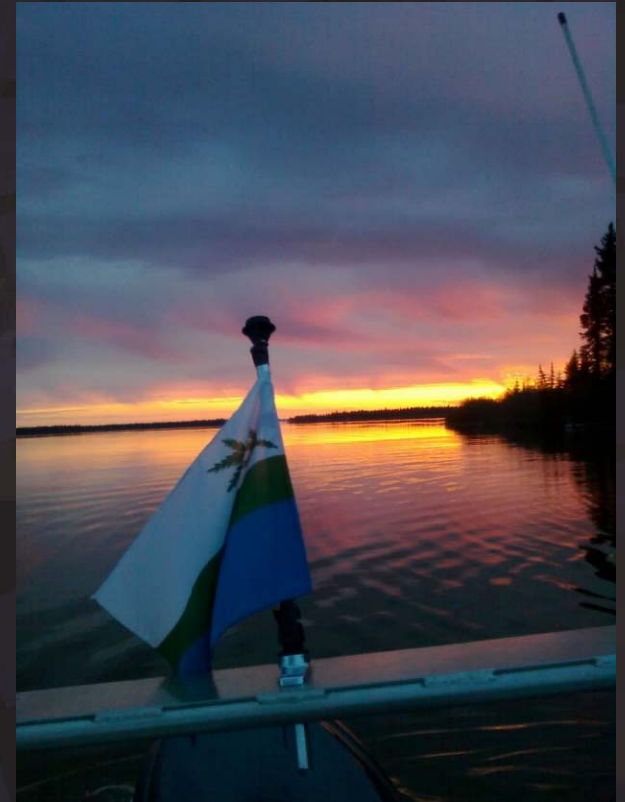
# Local Benefits – Employment

- Employment opportunities for projects in northern areas historically fall short in providing opportunities, employment equity plans, and in consideration of the barriers that Aboriginal peoples have in accessing jobs – Lessons learned!!!!
- Unrealistic employment prediction scenarios
- The predicted employment numbers during the construction phase fail to demonstrate long-term benefit to Labrador Inuit and ULM



# Who Pays for this and Who gets the Benefits

- Rate Hikes? What to Believe?
- Lessons from Voisey's Bay
- Contractors
- Unions
- Boom and Bust
- Municipal Concerns
- Social Concerns



# Closing Points

- Yes it is green, but how green locally?
- We live here, this is our back yard
- We need to be sure our concerns are taken into consideration
- The Truth about Possible Safety Risks
- Flooding: Where do We Stand?
- A Major Concern of the People: This panel needs to show real results and not just be labeled as Political “Smoke and Mirrors”